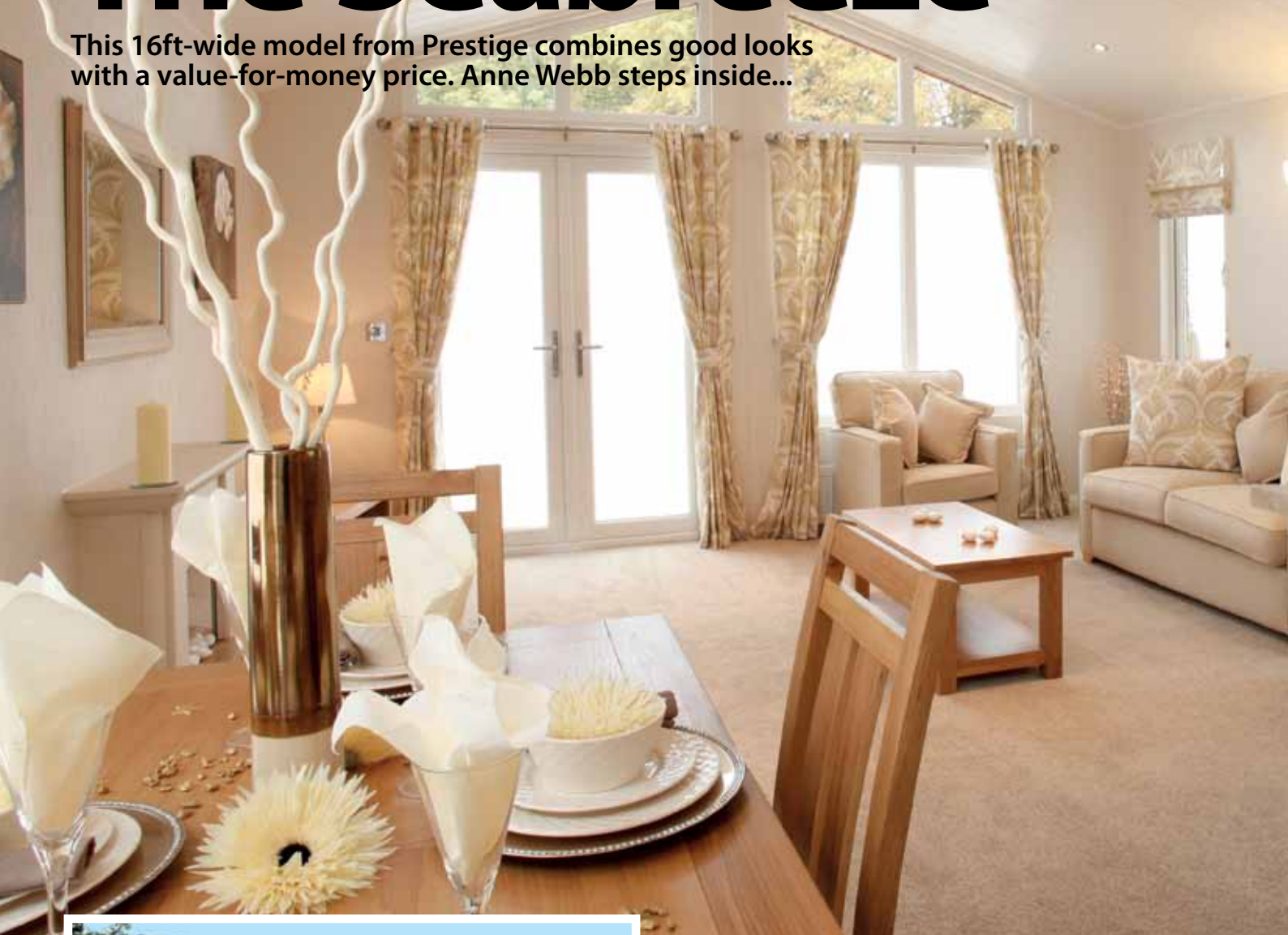


The Seabreeze

This 16ft-wide model from Prestige combines good looks with a value-for-money price. Anne Webb steps inside...



In the current economic climate, many people looking to buy a leisure lodge may feel that the large twin unit they had originally set their hearts on is now out of reach. That may be true, but there are alternatives and 16ft-wide lodges offer really well-proportioned and spacious

rooms at prices quite typically less than £100,000.

One such is the new Seabreeze from Prestige Park & Leisure Homes which is 42ft long and carries an ex-works price of just £74,037 including VAT. Better still, it lacks nothing that its larger brothers offer - has a spacious lounge/diner,

Left: Life's a breeze inside the Seabreeze from Prestige: a top quality budget range home

separate kitchen, family shower room, twin bedroom and a luxurious double bedroom with walk-in wardrobe and en suite bathroom.

Exterior

The Seabreeze is finished in high density wood composite cladding and the model reviewed was in a grey/green finish with wood-look uPVC window and door frames and a grey Decra tile roof. It has a pitched roof with a cross gable effect over the side entrance door. French doors at the front, with a large glazed panel

Above: Just 16ft wide, with a pitched roof, the Seabreeze is attractive inside and out

adjacent and triangular windows above which follow the roofline, allow plenty of light to enter the living area.

Side entrance

The single-door entrance on the side wall gives access to the living area and, on the right, there is a double door cloaks cupboard with coat hooks and storage space for outdoor clothes, with the central heating boiler alongside.

From this point a corridor turns left to the living area, and on the right there is a door which leads to a rear corridor

SEABREEZE CHECKLIST



✔ **SIZE:** 42 x 16ft

✔ **BATHROOMS:** one family shower room and an en suite bathroom with over-bath shower

✔ **BEDROOMS:** one double with en suite facilities and one twin

✔ **PRICE:** Ex-works, the Seabreeze is £74,037 including VAT.

✔ **INFORMATION:** The home reviewed here has been sold to York House Leisure, an organisation that owns and operates five parks in Yorkshire – Quarry Moor and New Park; Abbots Green; Castlewigg; Swaleside; The Old Hall; and York House. The Seabreeze is providing accommodation for one of YHL's managers. A new Seabreeze of this specification on a YHL park would carry a sited price of £119,950. Further information about York House Leisure's parks can be obtained from: The Bungalow, Wetherby Road, Boroughbridge, York, YO51 9HS. Telephone 01423 326100 or visit www.yhlparks.co.uk.

and the two bedrooms and bathroom. The living area has a vaulted ceiling but it is flat at the rear of the home.

Lounge

A lovely light and bright room, this is furnished in a way that makes it suitable for either residential or leisure use. Despite its name, the Seabreeze could go onto a residential park because it is built to the residential standard – BS3632 – and, if needed, an alternative exterior finish such as roughcast could be substituted.

Floor-length curtains, with



eyelet headings hang across the front doors and windows. They are in a pale gold paisley-pattern fabric and the same material is used for the Austrian blinds which hang at the other living area windows.

The carpet is in a light beige and the three-piece suite, comprising a two-seater sofa and two matching armchairs, is upholstered in a similar shade. A coffee table (with shelf

underneath) matches the light wood of the dining table and chairs.

Also in matching wood is the television table in the corner nearest the French doors. This has a shelf to accommodate a DVD player, or some other item of equipment, and drawers in the base for DVD or other storage.

White tongue-and-groove boarding is used for the vaulted

Above left: The breakfast bar provides a neat division between the lounge and the kitchen

ceiling and flush spotlights are included which illuminate the whole area. Additional lighting is provided by a wall light between the windows on the side wall.

Opposite, on the other side wall, is the fireplace with a feature 'lava coal' electric fire in a surround with mantelshelf above. There is a mirror on the wall above.

Dining area

This is behind the lounge on the entrance door side, opposite the kitchen, but due to the 16ft width this doesn't seem nearly as cramped as it would do in, say, a 10ft or 12ft-wide home.

Four chairs, with padded seats covered in a brown leather-look material, fit neatly beneath the rectangular table. A pendant lamp with a glass shade hangs above.

Kitchen

At this point the carpet changes to vinyl floor covering in a beige tile pattern. Units are in a medium wood finish (matching the rest of the wood in the living area) and work surfaces are in a pale marble-look finish. The layout is a very practical 'U' shape so that everything is easily to hand.

Entering the kitchen from the lounge end, there is a radiator mounted on the side of the first



A 'U' shape kitchen arrangement with a host of integrated appliances

unit, facing the dining area – another practical arrangement.

The worktop on the left forms an ideal breakfast bar that neatly divides the lounge from the kitchen. Underneath this worktop is an integrated fridge, a small wine rack and an integrated freezer.

In the corner there is a cupboard mounted on the countertop which has cupboard storage at the top, shallow

“A lovely light and bright room, the lounge is furnished in a way that makes it suitable for either residential or leisure use.”

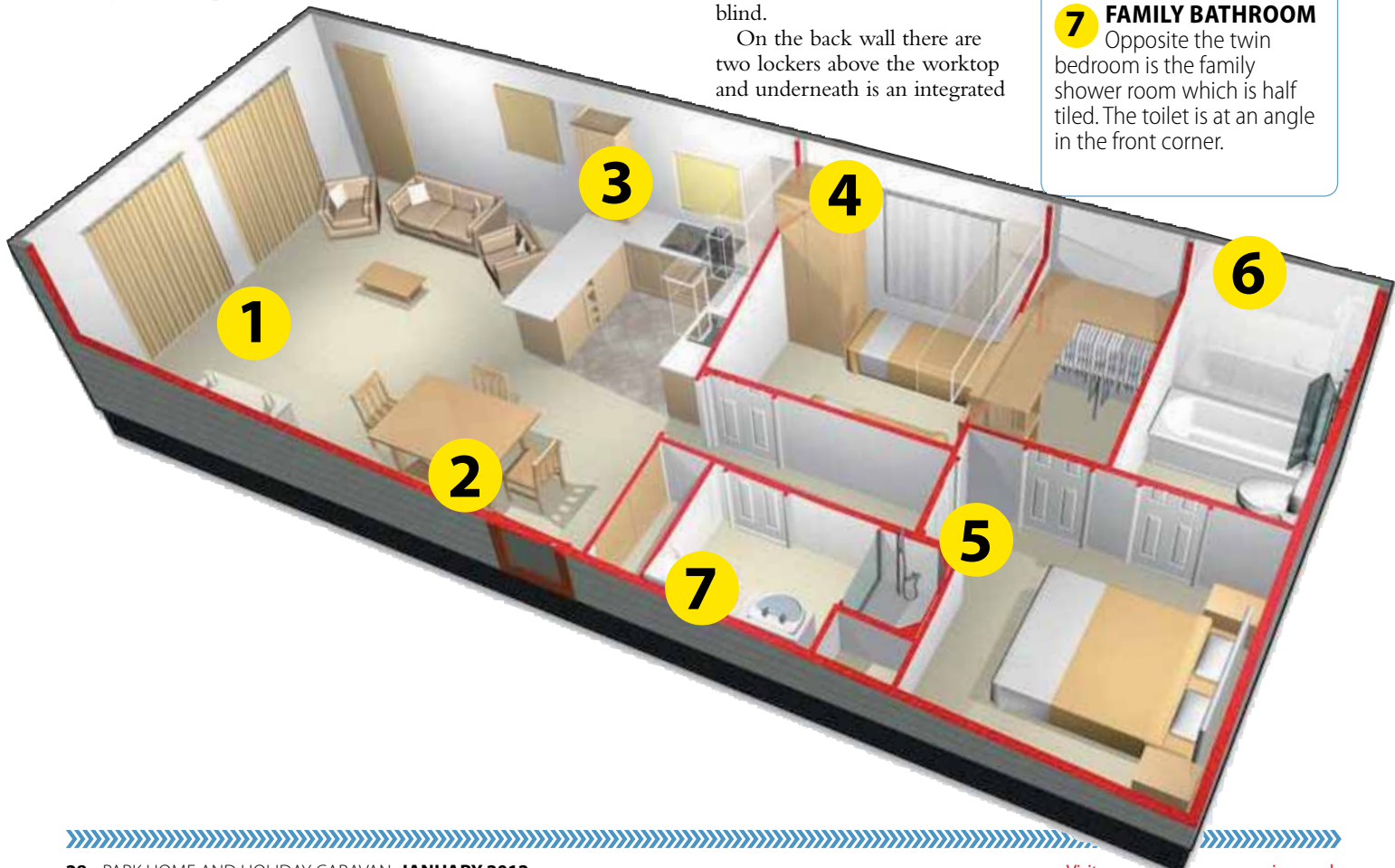
drawer storage in the bottom and an integrated microwave in the middle.

Along the outside wall there is a storage cupboard underneath the worktop with an integrated dishwasher adjacent, underneath the stainless steel sink unit. This has one and a half bowls, a drainer and mixer tap. The window above has an opening section and is fitted with a yellow roller blind.

On the back wall there are two lockers above the worktop and underneath is an integrated

FLOORPLAN

- 1 LOUNGE**
A lovely light and bright room, this is furnished in a way that makes it suitable for either residential or leisure use.
- 2 DINING AREA**
Four chairs, with padded seats covered in a brown leather-look material fit neatly beneath the rectangular table.
- 3 KITCHEN**
The kitchen is fully kitted out with modern appliances and arranged in a U shape design.
- 4 TWIN BEDROOM**
The beds are 2ft 6in wide against the back wall. Bedside table with drawer storage underneath.
- 5 MASTER BEDROOM**
The 5ft-wide bed, gold motif in places, superior interior decor for a 'budget' model.
- 6 EN SUITE ROOM**
Shower over bath and folding screen shower.
- 7 FAMILY BATHROOM**
Opposite the twin bedroom is the family shower room which is half tiled. The toilet is at an angle in the front corner.



**ASK THE EXPERT
LINDSAY PALMER
DESIGNER**

WHAT INSPIRED THIS DESIGN?

The brief was to design a 16ft-wide home that looked and felt really spacious. The layout works really well and the colours I used to accentuate this feeling are soft but bright, creating a warm 'glow' that flows throughout the home.

WHAT ARE YOUR FAVOURITE FEATURES?

My favourite area is the lounge/ kitchen /diner which is open plan and makes the home feels much bigger than it is. The clever use of a breakfast bar provides a great division between these spaces but still gives each room some definition.

HOW HAVE CUSTOMERS REACTED?

The reaction has been really positive with comments that there has been a gap in the market for a high quality, well designed 16ft-wide home at the right price.

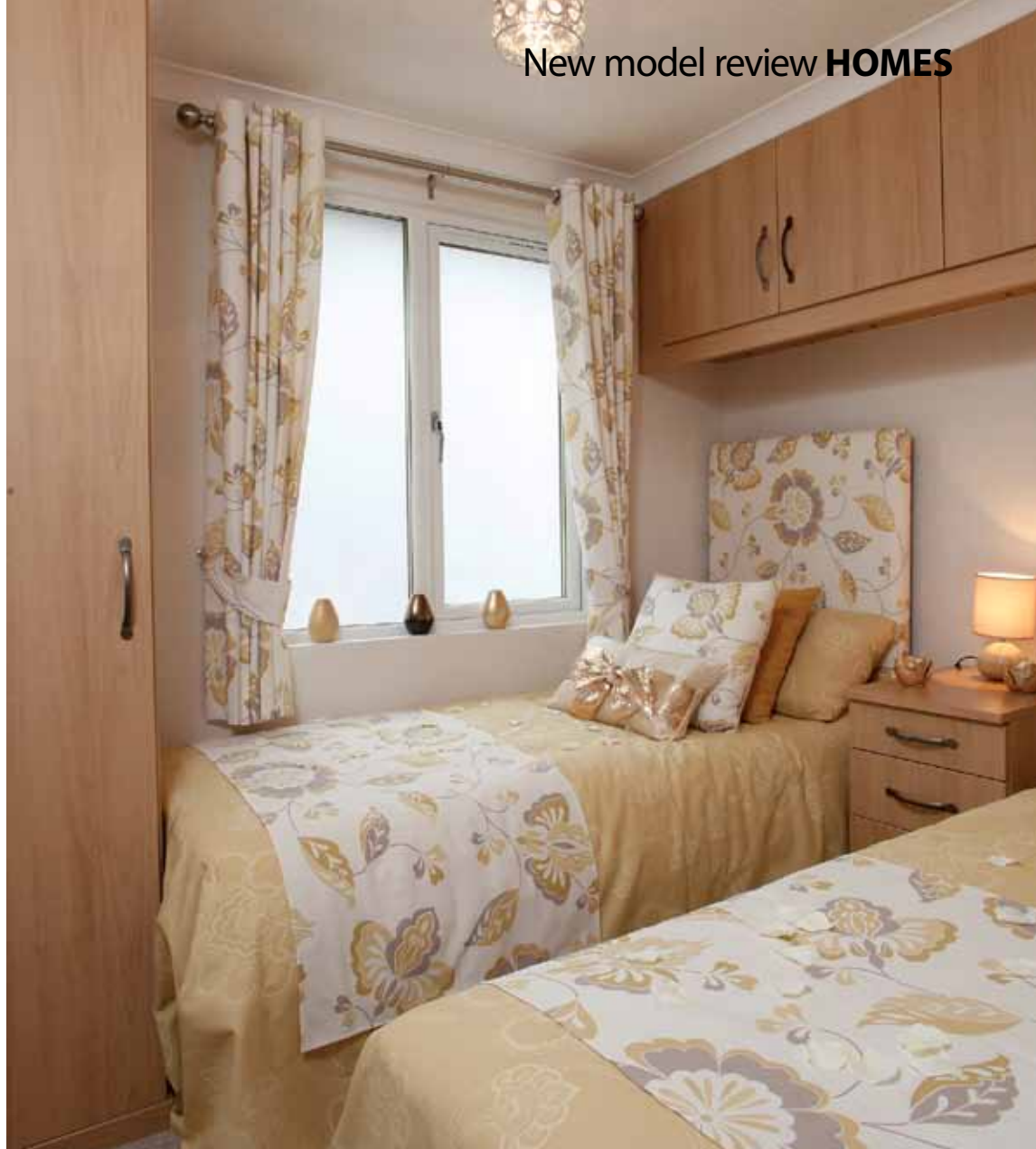
washer/dryer. Next to this is an electric cooker with a five burner gas hob above and a chimney style extractor, and at the far end there is a four drawer unit with another wall cupboard mounted above.

The kitchen area is lit by multi-directional spotlights and further light can be concentrated on the work surfaces on the back wall by fluorescent lights underneath the locker cupboards.

Twin bedroom

A door at the back of the living area leads into a corridor where the first door on the left gives access to the twin bedroom. The lounge decor scheme is repeated here with the same material being used for the curtains and headboard covering.

The beds are each 2ft 6in wide with deep headboards against the back wall and a bedside table with drawer storage underneath is between them. Two double-door lockers



Plenty of cupboard and wardrobe storage space in the twin bedroom

are at ceiling height.

At the foot of the bed there is a single-door wardrobe adjacent to the window with a small shelf with mirror above next to it.

Family bathroom

Back in the hall, there is a ceiling hatch giving access to loft storage space. Opposite the twin bedroom is the family shower room which is half-tiled. The toilet is at an angle in the front corner and adjacent to it (on the side wall) is the washbasin which is incorporated within a vanity unit with base storage. Above, there is an illuminated mirror-door cabinet with shaver point. A heated towel rail is on the opposite wall.



A yellow roller blind (the same as the one in the kitchen) hangs at the opening obscure-glass window and an extractor fan is ceiling-mounted.

The shower pod in the corner is 920mm x 800mm with a Perspex door.

Master bedroom suite

Although the Seabreeze might be regarded as a 'budget' model,

Above: The family shower room is compact but very well laid out and equipped

Prestige is to be congratulated on the interior décor where a colour scheme has been followed through most effectively.

Gold features in the master bedroom where it is used for the headboard. The bed is 5ft

The master bedroom boasts an en suite bathroom and walk-in wardrobe



wide. Curtains, which hang to floor level, are in an attractive stripe pattern of pale gold and grey and the medium wood used in all the other rooms features here, too. Bedside tables are the same as the one in the twin bedroom and a glass globe pendant lamp hangs above the bed. Power points on either side of the bed are ideally positioned for plugging in

bedside reading lamps. In the model reviewed here, there was a power point and co-axial for a wall-mounted television but this is an optional extra.

A door on the side wall adjacent to the bed leads into the en suite bathroom which is in similar style to the family shower room. The washbasin is incorporated within a vanity unit with storage in the base,



Above: Curtains hang to floor level at the large window in the master bedroom, an impressive room with 5ft-wide bed



and the mirrored illuminated cabinet is the same as the one in the shower room. A dual flush toilet with soft-close seat is positioned next to it and the

which has a radiator on the side wall. The hanging rail (with storage shelf above) is an L-shape and the electricity consumer unit is in the back corner.

“Prestige never disappoints and seems to have developed a superb and extensive range of homes to suit all pockets.”

Our verdict

Prestige never disappoints and seems to have developed a superb and extensive range of homes to suit all pockets and lifestyles (both in residential and leisure formats). We liked the comfort and sophisticated simplicity of the Seabreeze and think it represents very good value for money. It has an excellent array of integrated appliances in the kitchen and the other luxury touch is the master bedroom with en suite bathroom and walk-in wardrobe. Nowhere is there a feeling that it is cramped, or that furniture has been ‘squeezed up’ to fit into the 16ft width. |

bath, with shower over and a folding screen, is against the outside wall.

Next to the bathroom is a door into the walk-in wardrobe

Left: The en suite bathroom has a shower over the bath and a folding shower screen